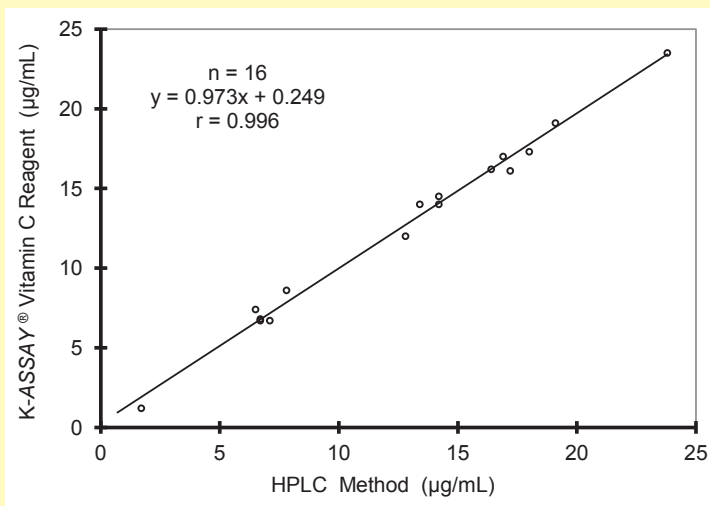


Vitamin C Assay Reagent

Assay reagent for the quantitative determination of Vitamin C in serum, plasma, food, beverages, and other biological samples.



Correlation to HPLC Method



Features:

- Highly sensitive and rapid enzymic colorimetric method for measuring Vitamin C
- Excellent correlation to HPLC at a fraction of the cost of HPLC
- U.S. Patent Number 6,153,399
- Suitable for human and animal serum/plasma, food, beverages, and other biological samples
- Assay Range: 0.5 - 50.0 µg/mL with a single calibrator
- Manual assay procedure and also applicable to many chemistry analyzers
- Color formation not affected by reducing substances
- Additional performance data shown on reverse

* For research use only in the U.S. Not for use in diagnostic procedures in the U.S.

KAMIYA BIOMEDICAL COMPANY

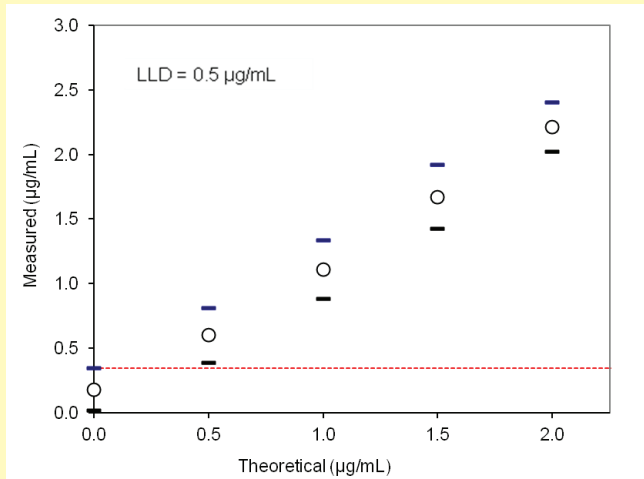
12779 Gateway Drive, Seattle, WA 98168

800-526-4925 • 206-575-8068 • FAX: 206-575-8094

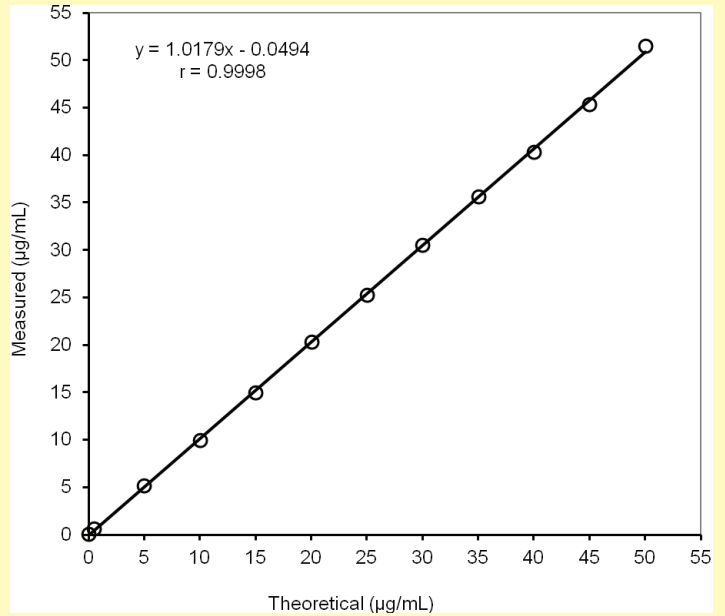
www.k-assay.com

K-ASSAY[®] Vitamin C Assay Performance Data

Lower Limit of Detection



Linearity (0.5 - 50 µg/mL)



Precision

Within Run Precision n=20	Mean [µg/mL]	SD [µg/mL]	CV [%]
Sample 1	2.0	0.073	3.72%
Sample 2	10.1	0.091	0.90%
Sample 3	40.3	0.220	0.55%

Between Day Precision n=25 (5 days)	Mean [µg/mL]	SD [µg/mL]	CV [%]
Sample 1	2.1	0.097	4.60%
Sample 2	10.2	0.077	0.76%
Sample 3	40.0	0.220	0.55%

KAMIYA BIOMEDICAL COMPANY

12779 Gateway Drive, Seattle, WA 98168

800-526-4925 • 206-575-8068 • FAX: 206-575-8094

www.k-assay.com