

PRODUCT DATA SHEET

Product: Anti-Leptin Receptor pAb

Cat. No.: PC-145 (100 μ L)

Synonyms:

Anti-OB-R; anti-CD295

Specificity:

Recognizes leptin receptor.

Species Reactivity:

Human, mouse and rat. Other species not tested.

Host:

Rabbit

Immunogen:

Synthetic peptide corresponding to amino acids 577-594 (K⁵⁷⁷EIQWKTHEVFDKSKSA⁵⁹⁴) of the extracellular domain of rat leptin receptor.

Format:

100 μ L of liquid purified polyclonal antibody in PBS containing 0.05% sodium azide.

Storage:

For long term, store at -20°C. Aliquot to avoid freeze/thaw cycles.

Application and Suggested Dilution:

- Western blot: Use at a 1:2,000 dilution. Detects bands of ~100 kDa and ~125 kDa, representing the short and long forms of leptin receptor. Also detects two unrelated bands of ~31 kDa and ~35 kDa.

The optimal dilution for a specific application should be determined by the researcher.

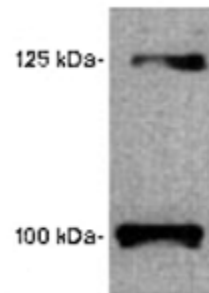


Figure: Western blot of both short and long forms of leptin receptor on mouse lung tissue extract using pAb to Leptin Receptor (PC-145).

Limitations:

For *in vitro* research use only. Not for use in diagnostics or in humans.

Warranty:

No warranties, expressed or implied, are made regarding the use of this product. KAMIYA BIOMEDICAL COMPANY is not liable for any damage, personal injury, or economic loss caused by this product.