

PRODUCT DATA SHEET

Product: Anti-Caspase-1 mAb, clone 1H11

Cat. No.: MC-356 (100 µg)

Specificity:

Recognizes an epitope within the p20 fragment of mouse caspase-1. Detects a band of ~45 kDa by Western blot. Does not cross-react with mouse caspase-11 or -12.

Species Reactivity:

Mouse. Other species not tested.

Ig Isotype:

Rat IgG₁

Immunogen:

p20 fragment of mouse caspase-1 and synthetic peptide corresponding to aa 206-220 (T²⁰⁶ALEMVKEVKEFAAC²²⁰) of mouse caspase-1.

Format:

100 µg of a 1 mg/mL solution of antibody purified with protein G sepharose. Antibody in PBS with 0.02% sodium azide.

Storage:

Store at 4°C for short term and at -20°C long term. Aliquot to avoid freeze/thaw cycles.

Applications:

- Flow cytometry
- ELISA
- Western Blot

The optimal dilution for a specific application should be determined by the researcher.

Limitations:

For *in vitro* research use only. Not for use in diagnostics or in humans.

Warranty:

No warranties, expressed or implied, are made regarding the use of this product. KAMIYA BIOMEDICAL COMPANY is not liable for any damage, personal injury, or economic loss caused by this product.

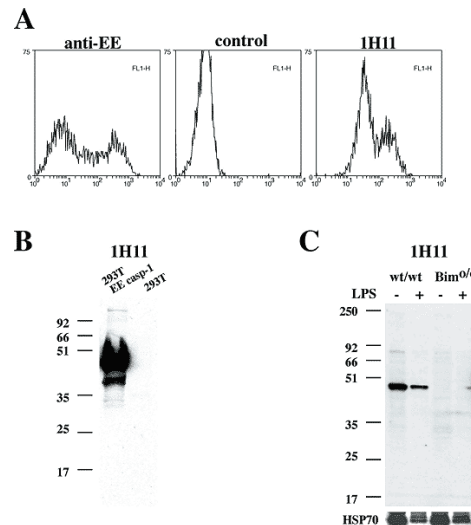


Figure A: Antibody to caspase-1 clone 1H11 (MC-356) detects overexpressed caspase-1 in 293T cells transiently transfected with an EE tagged inactive cysteine mutant of mouse caspase-1 by flow cytometry.
 Figure B: Antibody to caspase-1 clone 1H11 (MC-356) detects overexpressed caspase-1 in 293T cells transiently transfected with a EE tagged inactive cysteine mutant of mouse caspase-1 as a band of ~45 kDa.
 Figure C: Antibody to caspase-1 clone 1H11 (MC-356) detects endogenous pro-caspase-1 in spleen from WT mice, but not from spleen of caspase-1 deficient mice. HSP-70: loading control.