

## PRODUCT DATA SHEET

**Product:** Anti-Fas Ligand mAb, clone A11

**Cat. No.:** MC-105 (100 µg)

**Synonyms:**

CD95L, APO-1L, CD178, TNFSF 6

**Specificity:**

Fas Ligand (FasL) is a type II membrane protein and a member of the tumor necrosis factor family. When interacting with the Fas receptor, the trimeric FasL induces apoptosis. It is responsible for the activation-induced apoptosis of peripheral T cells and functions as an effector molecule for cytotoxic T cells. FasL is expressed in activated lymphocytes, Sertoli cells, and some tumor cells.

**Species Reactivity:**

Mouse. Others not tested.

**Ig Isotype:**

Rat IgM

**Immunogen:**

Synthetic peptide corresponding to aa 196-220 of the mouse Fas Ligand protein

**Format:**

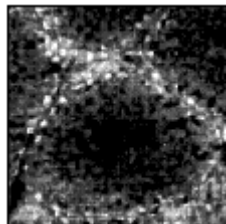
100 µL of 1 mg/mL monoclonal antibody in PBS with 0.02% sodium azide. Purity ≥ 95% by SDS-PAGE.

**Storage:**

Store at 4°C. Do not freeze.

**Applications and Suggested Dilutions:**

- Flow cytometry
- Immunohistochemistry: *Excellent for this application.*



**Frozen Sections-** Use 20 µg/mL, incubate 1 hr at room temp. Method: Cryostat sections (6-8 µm) were air dried, fixed in 4% paraformaldehyde in PBS and used immediately. Sections were incubated for 1 hr at RT with 20 µg/mL of A11 antibody in PBS, 0.2% BSA, 0.05% Tween 20. After rinsing in PBS, a FITC-conjugated anti-rat IgM was added for 30 min, slides washed again in PBS and visualized using a fluorescence microscope.

**Paraffin-Embedded Sections-** Dewax in xylene (2 x 10 min), EtOH 100% (2 x 10 min), block endogenous peroxidase (0.6% H<sub>2</sub>O<sub>2</sub> in Methanol 10 min), rehydrate through graded EtOH (100%, 95%, 70%), rinse in H<sub>2</sub>O, unmask epitopes by heating slides in citrate buffer (0.01 M, pH 6.0) 2 x 5 min in microwave oven (650-750W), cool down to RT 20 min, wash 1x in PBS, incubate with A11 20 µg/mL antibody, wash in PBS, incubate in anti-rat IgM HRP, wash in PBS, develop in appropriate substrate solution (DAB or AEC).

The optimal dilution for a specific application should be determined by the researcher.

**Limitations:**

For *in vitro* research use only. Not for use in diagnostics or in humans.

**Warranty:**

No warranties, expressed or implied, are made regarding the use of this product. KAMIYA BIOMEDICAL COMPANY is not liable for any damage, personal injury, or economic loss caused by this product.