

## PRODUCT DATA SHEET

### **Product:** Epitope/Affinity Tag Positive Control

**Cat. No:** BC-144 (0.2 ml)

**Procedure:** Bacteria (E. coli) were lysed with SDS-PAGE sample loading dye, boiled at 95°C for 10 minutes, then centrifuged at 13,000g for 15 minutes.

**Specification:** The E. coli lysate contains a 41 kDa protein expressing commonly used tags fused in the order of GST- T7 – HSV – C-MYC – VSV – Glu-Glu – V5 – E-tag – FLAG – S-tag – HA – 6xHIS. Protein concentration is 0.5 mg/ml.

**Format:**

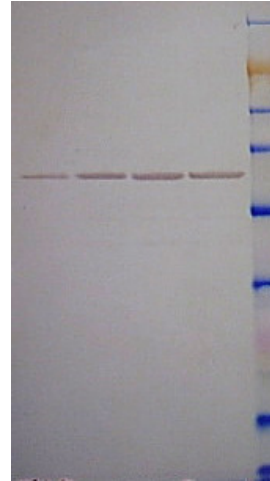
Liquid. 1X reduced SDS-PAGE sample loading buffer,

**Storage and Stability:**

Store at +4°C for short term and at -20°C for long term.

**Applications:**

■ Western blot: Positive control for Western blot with epitope tags and fusion tags. Recommend loading 0.5 – 2.0 µl of cell lysate for 10-12% gels.



**Limitations:**

For *in vitro* research use only. Not for use in diagnostics or in humans.

**Warranty:**

No warranties, expressed or implied, are made regarding the use of this product. KAMIYA BIOMEDICAL COMPANY is not liable for any damage, personal injury, or economic loss caused by this product.